

ATLAS VANDAL RESISTANT SOLAR SHELTER LIGHT



Features

The Atlas vandal resistant Solar Shelter Light is designed to replace or provide reliable “mains power free” solar lighting for BBQ areas, bus shelters, amenities block's, covered walkways, pedestrian tunnels or park and garden shelters. The exterior unit is manufactured from 4mm wall, 316 marine grade stainless steel and 6mm SLX Lexan (polycarbonate) lens making it ideal for vandal prone locations. All exposed fixings are 316 grade stainless steel tamper proof fixings. The rubber mounted toughened glass laminated solar panel is linked to the solar light head using waterproof connectors in such a way that ensures no wiring is exposed.

- Vandal resistant design and manufacture
- 4mm wall 316/304 grade stainless steel casing with SLX lexan screen
- Stainless steel tamperproof fixings
- 30% to 100% radar sensor operated lighting
- Oversize solar panel ensures fast recharge
- Ridgid or flexible solar panel options
- Concealed ceiling mounts
- Wide light distribution pattern
- Premium LiFePo4 battery
- 10 metre connecting cable
- Automatic dusk to dawn lighting
- 3 year warranty for faulty workmanship or component failure not influenced by external means

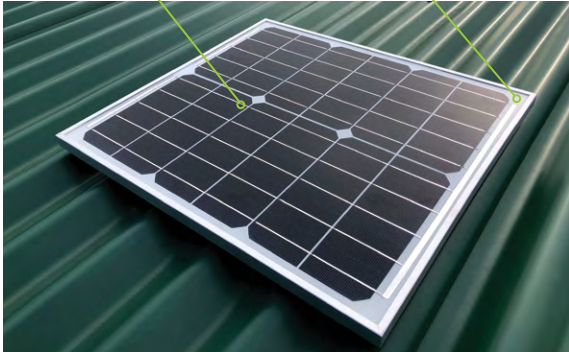


Luminaire Height	2 - 5 m
Lumen Output	500Lm
LED Output	5W

VANDAL RESISTANT SOLAR SHELTER SPECIFICATION

High impact tempered glass

20W solar panel

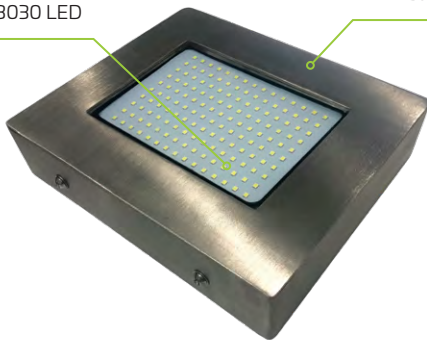


Stainless steel tamper proof fixings

6mm SLX Lexan

4mm stainless steel casing

Osram 3030 LED



Optional flexible solar panel to match roof profile



Applications

BBQ areas, Bus shelters, Amenities block's, Park shelters

Technical Data

Solar Panel Wattage	20W
LED Output	5W
Lumen Output	500 lm
Battery Type	LiFePO4
Battery Specifications	8AH 3.7V (29.6Wh)
Autonomy	> 7 nights
Correlated Colour Temp (CCT)	5700K
Fixture Size	234 x 196 x 58mm
Light Source	Osram 3030
Recharge	6 hours
Mounting Height	2 - 5 m
Mounting	Ceiling
Finish	Stainless steel and SLX Lexan
Warranty Period	3 years
SKU	SOLV003

Mode of Operation

The 360° radar sensor is activated by movement and acts as a power saving feature. The light will operate at 30% output until the radar is activated where it will operate at 100% until no movement is detected returning to 30% output.

As we continue to improve the products function and/or design specifications and data provided may change without notice. Errors and omissions accepted.