

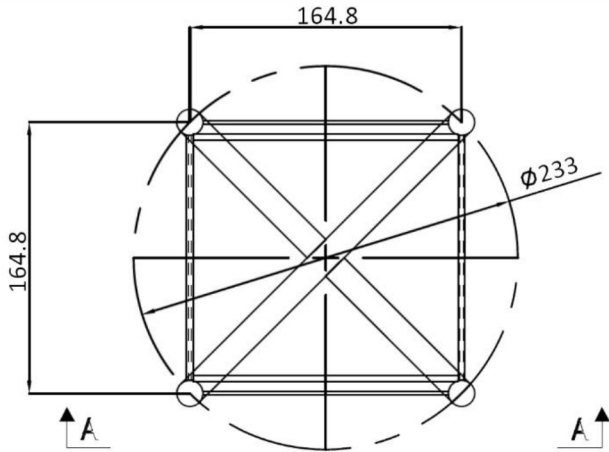
FOOTING AND FOUNDATION DESIGN GUIDE

Item:	SLD M20 FOUNDATION CAGE
Description:	M20 Foundation bolt/cage assembly on 233mm PCD. Based on average soil conditions. Certification by others.
Bolt Pattern:	4 M20 on 233 PCD
Ultimate Base Moment:	10.1 kNm
Ultimate Base Shear:	2.5 kN

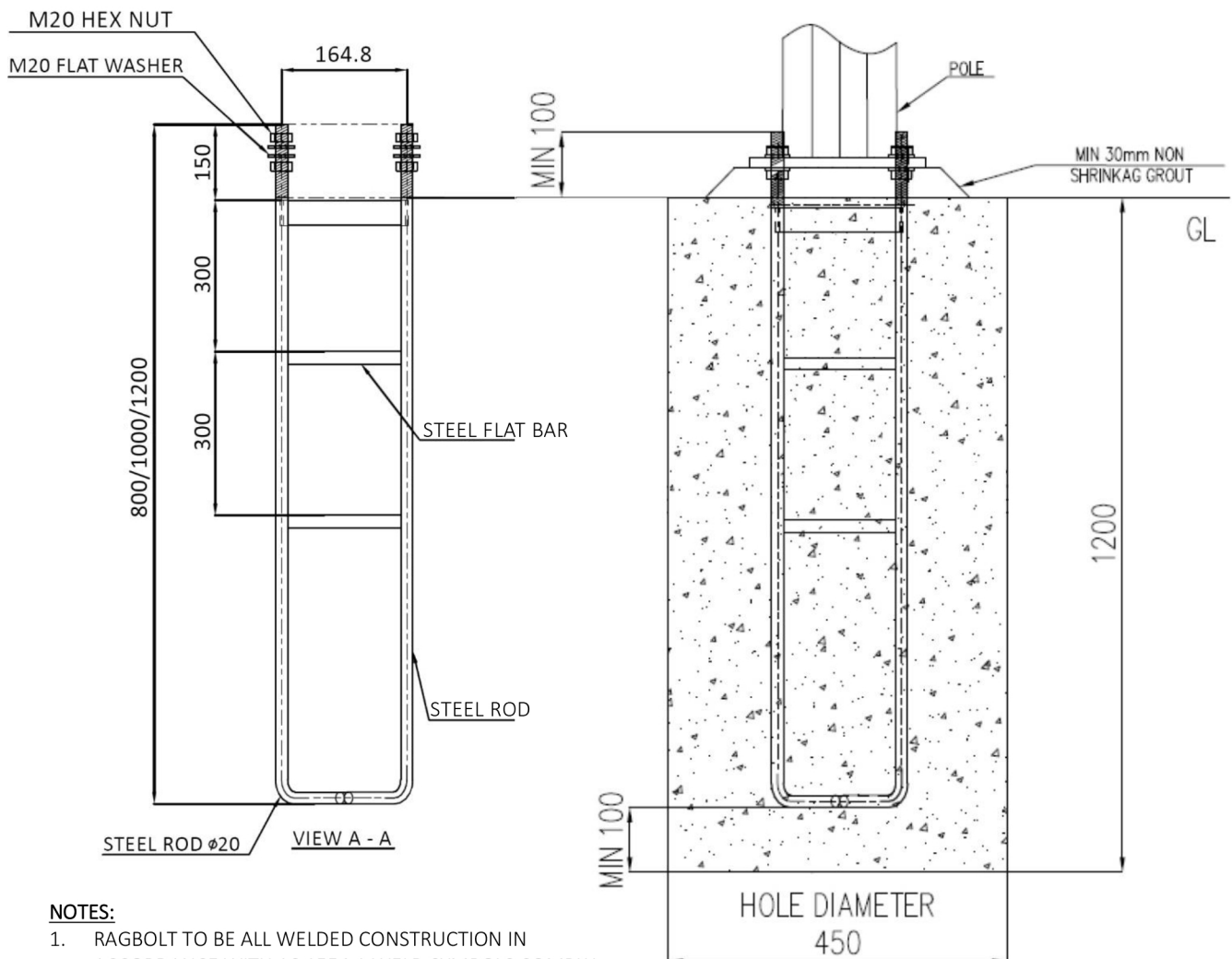
Soil Type As defined in AS/NZS 4676:2000 Appendix	PILE DIAMETER	PILE LENGTH	CAGE/BOLT ASSEMBLY
Firm Damp Clays; Sandy Clays; Damp Sands Fb > 100 kPa	450mm	1200mm	M20

Notes:

1. This table is to be used as a guide only. All pile specifications should be confirmed with an appropriately qualified engineer prior to construction.
2. All workmanship and materials shall be in accordance with the current SAA code AS3600 Concrete structures, and AS 2159 Piling – Design and installation with amendments.
3. All concrete to have a minimum characteristic strength of 32MPa or 40MPa where an exposure classification of Moderate is determined in accordance with AS2159 Piling-Design and installation.
4. Minimum clear concrete cover to be 65mm.
5. All concrete shall be place and vibrated to optimum compaction.
6. Pile casings to be used for constructions purposes where required.
7. Engineering advice is to be sort where soils are assessed to be of exposure classifications severe or greater as determined in accordance with AS2159 Piling-Design and installation.
8. Soil classification to be determined by a geotechnical engineer.



TOP VIEW OF RAGBOLT ASSEMBLY



NOTES:

1. RAGBOLT TO BE ALL WELDED CONSTRUCTION IN ACCORDANCE WITH AS 1554.1 WELD SYMBOLS COMPLY WITH AS 1103.3
2. RAGBOLT TO BE HOT DIP GALVANISED AFTER FABRICATION IN ACCORDANCE WITH AS 1650
3. OVERALL CAGE HEIGHT DETERMINED BY COLUMN HEIGHT AND SUBSTRATE DENSITY

APPROX. 18KG