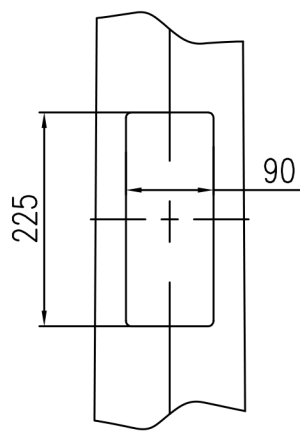
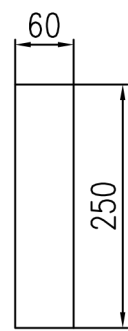


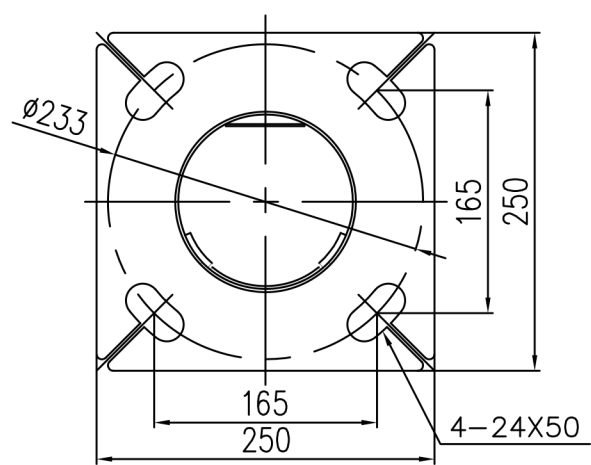
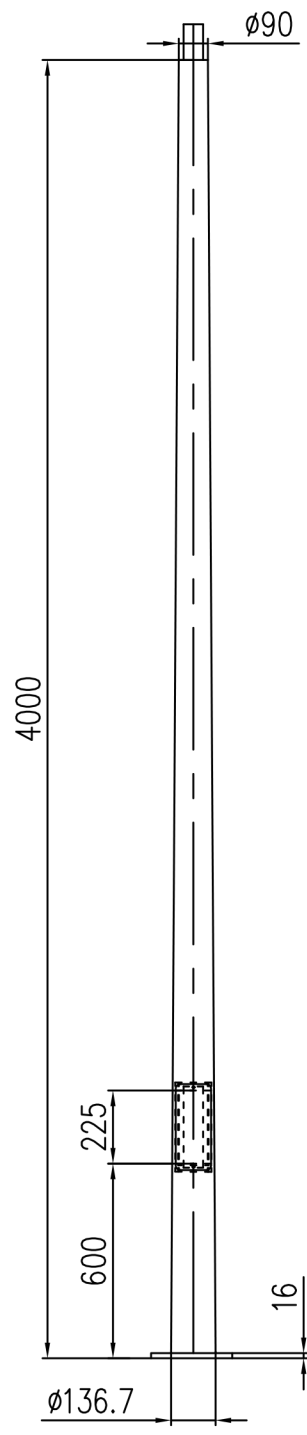
SPIGOT DETAIL



DOOR DETAIL



INTERNAL MOUNTING  
PLATE DETAIL



BASEPLATE FOR 4-M20@233 PCD RAGBOLTS

**NOTES:**

1. POLES DESIGNED IN ACCORDANCE WITH BCA, AS4100:1998, AS/NZS 1170.2 2002, AS 1798:1992, AS/NZS 4676:2000, AS/NZS 4677:2000.
2. HOT ROLLED STEEL FLAT PRODUCTS TO CONFORM TO AS 1594
3. HOT ROLLED STEEL BARS AND SECTIONS TO CONFORM TO AS 3679
4. WELDING OF STEEL STRUCTURES TO CONFORM TO AS/NZS 1554.1:2004
5. ALL STEEL ITEMS TO BE FULLY HOT DIP GALVANISED AFTER FABRICATION TO AS/NZS 4680:2006.
6. HOT ROLLED STEEL PLATES TO CONFORM TO AS3678.
7. ALL DIMENSION ARE IN MILLIMETRES

Customer/Project	
Title	4m Tapered round Steelmax lighting column. Complete with access door and 60mm OD mounting spigot.
LAST UPDATED	21/05/20
Checked by	Scott Riddell



Solar Lighting Designs

1/14 Stennett Road  
**Ingleburn NSW, 2565**  
**PH: 1 3 0 0 7 6 5 2 6 5**  
**EMAIL: Sales@sld.eco**