

RGB Floodlight User Instructions

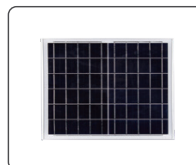
Please read all instructions carefully before use



Materials in Package



01 : Solar flood light (1pc)



02 : Solar Panel (1pc)



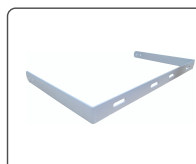
03 : Remote control (1pc)



04 : Expansion screw (4pcs)
M8*60MM



05 : 3.7m Adapter cable (1pc)



06 : Brackets (1 pc)

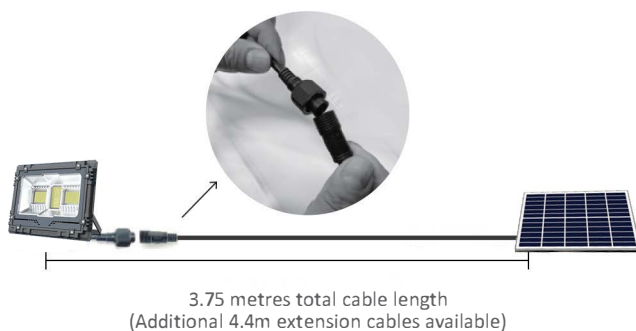


07 : AAA Battery (2pcs)

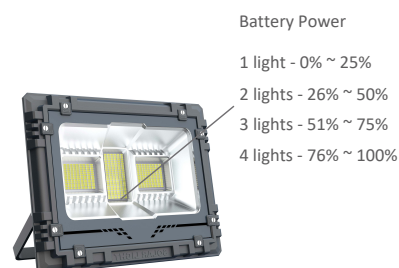


08 : User manual (1pc)

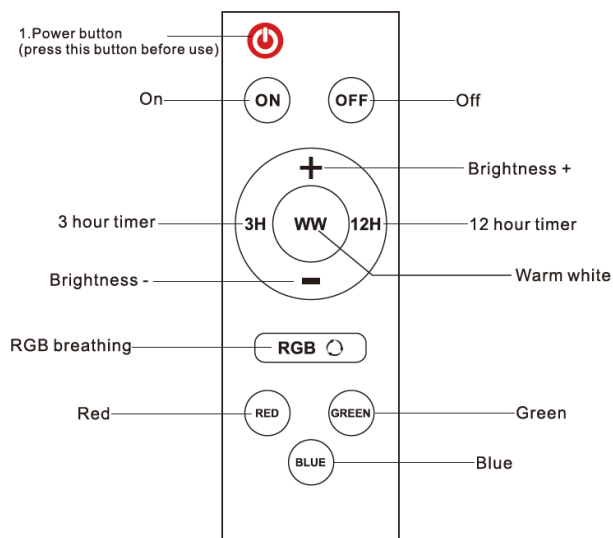
Wiring Connection Diagram



Battery Capacity Indicator



RGB Remote Controller Functions:

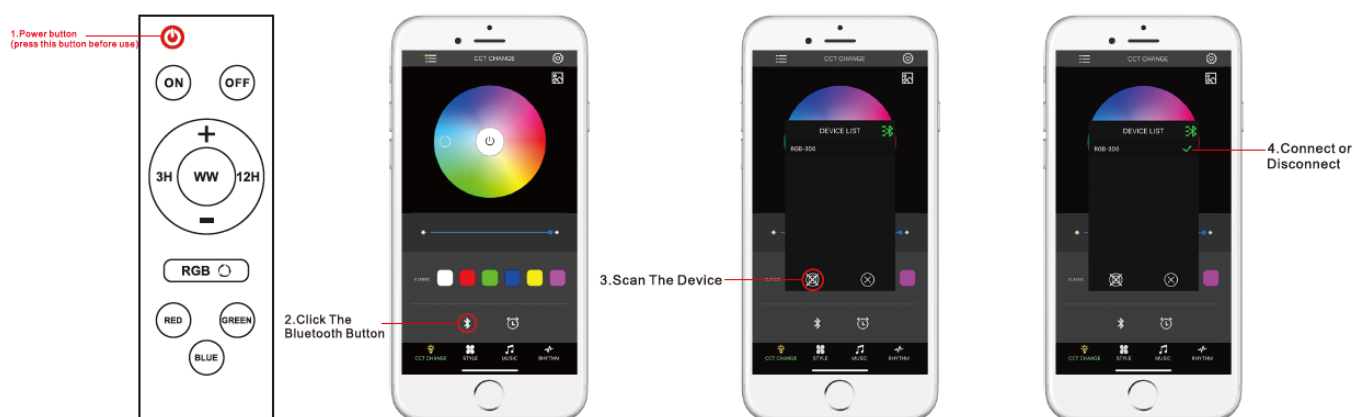


Scan below QR code to download App



1. Power on (Press red button to turn on lamp)
 2. Click The Bluetooth Button
 3. Scan The Device
 4. Connect or Disconnect
- For next steps see in "Sunc Smart" App

Connecting The RGB Floodlight To The App



Notes

1. Brightness levels, 3 hour and 12 hour automatic timer modes and red, green and blue colour modes are selected via the remote control.
2. The phone app has access to a selectable colour wheel and specific operation time and day mode, allowing you to choose the desired operational times and set those times to specific days.
3. When selecting rhythm mode on the phone app, connect a Bluetooth speaker to your phone. When music is playing, the light will change colours in time with music.
4. The light can turn on manually during the day or night with the with ON/OFF button.

Before Installation

The performance of the product is directly affected by the amount of light the panel receives, so it is recommended that you install the solar floodlight in a place where the panel will receive a high amount of direct sunlight throughout the day. The season and weather can also affect the products performance, though if the panel is placed in an optimal position out of shady areas, the floodlight will operate properly. Additionally, remove any debris that might fall onto the solar panel and occasionally wash off any dust that may have built up.

Auto timer mode and there has been extended periods of cloudy weather, lowering the lighting output to 50% or 25% will lower the battery drain and ensure that it will continue to operate throughout the night. It is not recommended to install this product where the panel will be exposed to ambient lighting, such as street lighting, throughout the night. If the inbuilt photocell within the solar panel detects light from another source it may not operate.

This solar light has been installed with custom programming that allows you to use the product during the day and night, by manually turning it on via the remote control. Due to this, this light is perfectly suited for indoor applications, such as garages, sheds etc.